



[WWW.VIVEREILGRAPPA.IT](http://WWW.VIVEREILGRAPPA.IT)

FLIGHT SITE

# MONTE GRAPPA

TAKE-OFF AND LANDING AREAS MANAGED BY CONSORZIO TURISTICO VIVERE IL GRAPPA





# LANDING AREA GARDEN RELAIS



## DATA SHEET

Landing	Semonzetto
Height Landing	130 m
Car parking	yes
Co-ordinates Gps	45.80653, 11.78532
Refreshment	yes
Toilets	yes

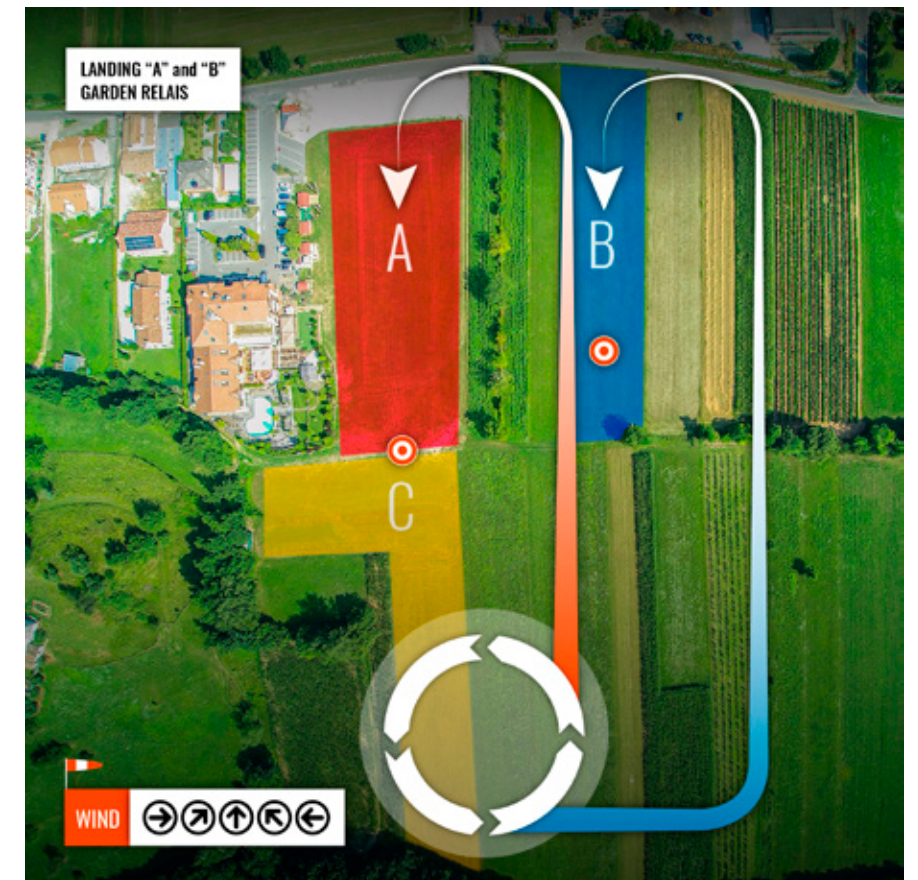
Wide landing area located in Semonzetto near the Hotel Garden Relais in Via Caose 22, Borso del Grappa, Treviso.

The landing can be used by paraglider and hang-glider pilots. It gives the opportunity to land approaching from all four directions: **north, south, east and west.**

Please pay particular attention while landing with strong west wind because the landing area is located downwind of some small hills and the hotel building.

Pay attention as well to the trees and vineyards surrounding the area, and to the parking lot on the north side of the field. The landing areas are marked on the picture by the letters A, B and C.

In case of an off-field landing, please move to the designated folding areas as soon as possible.





# LANDING AREA PARADISO



## DATA SHEET

Landing	Semonzo del Grappa
Height Landing	190 m
Car parking	yes
Co-ordinates Gps	45.80818, 11.7699
Refreshment	100 m
Toilets	yes

The landing area Paradiso is located in Semonzo, Via Casale Nuovo, at the cross road with Via Giovanni da Semonzo.

**It is reserved exclusively for the landing of paragliders.**

Please pay particular attention to the telephone and power lines located south of the field, as well as the trees and vineyards that surround it.

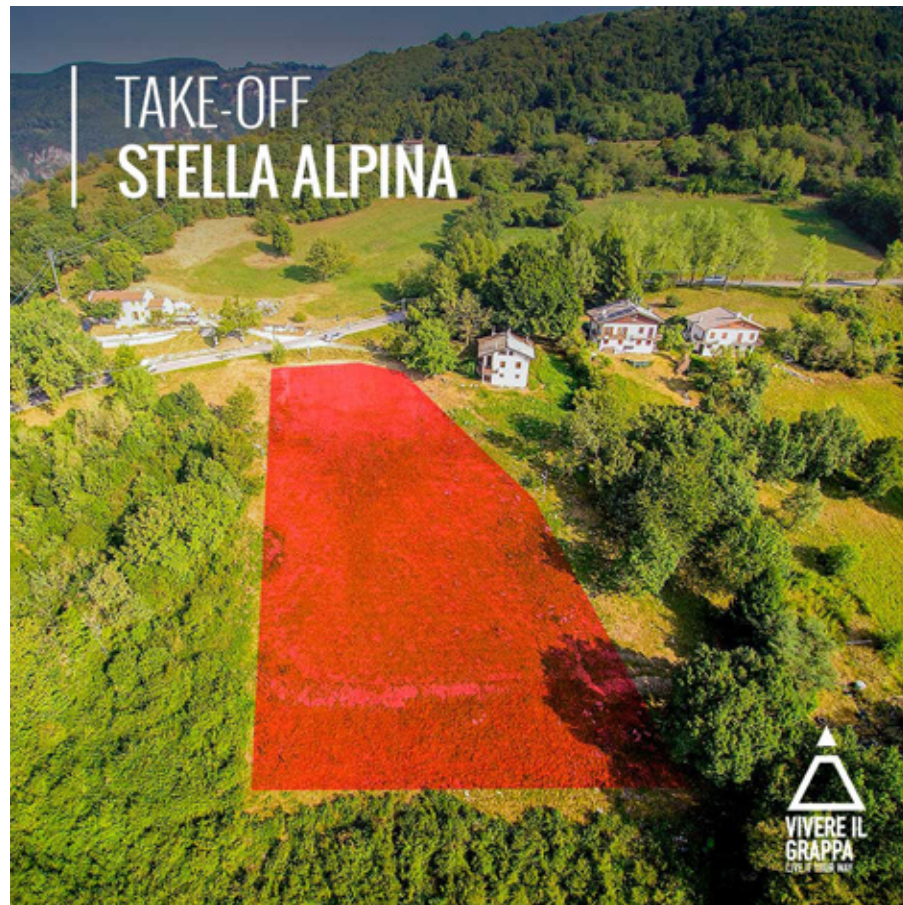
The landing areas are marked on the picture by the letters A and B. Please stay out of the private fields and, in case of an off-field landing, move away as quickly as possible without causing damages.

The landing area has a wide parking lot, toilets, bars and restaurants just a few meters away by foot.





## TAKE-OFF STELLA ALPINA



### DATA SHEET

Take-off area	Prai di Semonzo
Height take-off	m. 702
Wind direction	south
Top landing	no
Recommended landing place	Via Casale Nuovo (Paradiso) m.190
Co-ordinates Gps	45.81948, 11.76342
Car parking	no
Refreshment	no

Grassy take-off for paragliders located in Borso del Grappa on the road Generale Giardino SP 140, 200 mt after the 13° hairpin turn.

This take-off should be used with south wind and light winds from **east and west**. We recommend to use the shuttle service to reach this take-off due to the lack of parking spots.

## TAKE-OFF TAPPETI



### DATA SHEET

Take-off area	Col del Puppolo
Height take-off	m. 830
Wind direction	south - south/east - south/west
Top landing	no
Recommended landing place	Via Casale Nuovo (Paradiso) m.190
Co-ordinates Gps	45.8235, 11.76875
Car parking	yes / 100 m
Refreshment	yes / 100 m

Main take-off of the area for paragliders, made of artificial turf.

It is located in Borso del Grappa on the road Generale Giardino SP 140, 200 mt before the 17° hairpin turn (take-off Pedana, for hang-gliders, near the Restaurant Il Puppolo).

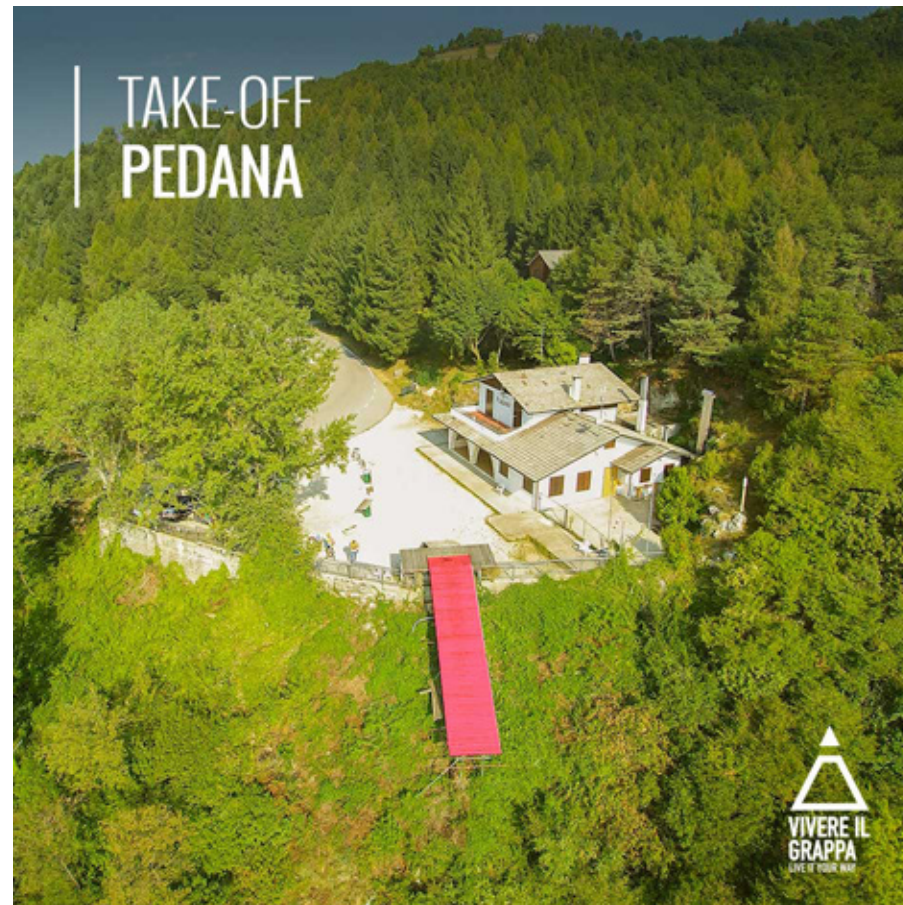
This take-off should be used with south wind and light winds **from east and west**.

We recommend to use the shuttle service to reach this take-off due to the lack of parking spots.

Caution, with east wind there is possibility of turbulence. Set the glider after wearing the harness to avoid.



# LAUNCH PAD PEDANA



## DATA SHEET

Take-off area	Col del Puppolo
Height take-off	m. 866
Wind direction	east - south/east
Top landing	no
Recommended landing place	Via Caose (Garden Relais) m. 130
Co-ordinates Gps	45.82441, 11.77124
Car parking	yes
Refreshment	yes

**Launch pad reserved for hang-gliders.** It is located in Borso del Grappa on the road Generale Giardino SP 140 at the 17° hairpin turn. This launch pad made of iron and wood has a wide grassy area to prepare the gear in the inner part of the hairpin bend. Please leave the area in front of the restaurant clear to allow pilots to reach the pad. We recommend pilots to use the shuttle service to reach this take-off due to the lack of parking spots.



**IT IS STRICTLY FORBIDDEN to use the hang glider platform (Puppolo) as paragliders take off.** Anyone found in violation of this rule will be immediately removed from the flight site and will be prosecuted according to the law.

# TAKE-OFF CASSETTE



## DATA SHEET

Take-off area	Col Serai
Height take-off	m. 1000
Wind direction	west - south/west
Top landing	yes
Recommended landing place	Via Casale Nuovo (Paradiso) m.190
Co-ordinates Gps	45.82814, 11.7683
Car parking	no
Refreshment	summer only

Grassy take-off area for paragliders located in Borso del Grappa on the road Generale Giardino SP 140. 300 mt after the 20° hairpin turn turn left on the steep road following directions for Col Serai.

After 100 mt, the take-off will appear on the left side of the road.

It is suitable for take-offs with **west winds**.

We recommend pilots to use the shuttle service to reach this take-off area due to the lack of parking spots. Please respect the private areas avoiding leaving your car at the side of the road.



**Take-off in east direction is strictly forbidden, danger of death.**



## TAKE-OFF BAITA CAMOL

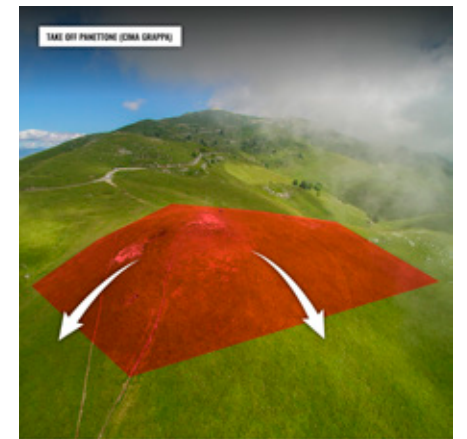


### DATA SHEET

Take-off area	Camol
Height take-off	m. 1230
Wind direction	south - owest / south
Top landing	no
Recommended landing place	Via Casale Nuovo (Paradiso) m.190 Via Caose (Garden Relais) m. 130
Co-ordinates Gps	45.83964, 11.78608
Car parking	yes / m 400
Refreshment	yes / m 400

Grassy take-off area for paragliders located on the road Generale Giardino SP 140. Following directions to Cima Grappa, 800 mt after the 21° hairpin turn you can leave the car at Baita Camol and take the hiking path n. 100 to Cima Grappa. 400 mt after the beginning of the path, you will notice the windsock placed in the middle of the wide take-off area. It is suitable for take-offs with **south-southwest winds**.

## TAKE-OFF PANETTONE



### DATA SHEET

Take-off area	Monte Meda - Cima Grappa
Height take-off	m. 1550
Wind direction	east - south/east - west
Top landing	yes
Recommended landing place	Via Casale Nuovo (Paradiso) m.190 Via Caose (Garden Relais) m. 130
Co-ordinates Gps	45.86126, 11.8043
Car parking	yes
Refreshment	no

Panoramic grassy take-off area just below Cima Grappa. On the road Generale Giardino SP 140, 500 mt after the 27° hairpin turn, you will cross the hiking path n.100: there you will find a parking area and the take-off is on the right side, on the hill top, identifiable by the windsock. It is a wide take-off area oriented towards east-southeast. **It can be used both by paragliders and hang-gliders.** The take-off area facing west, on the contrary, is smaller and can be used only by paragliders. While taking off from the latter, please pay attention to the bomb-holes hidden between the grass.



# TAKE-OFF COL CAMPEGGIA



## DATA SHEET

Take-off area	Col Campeggia
Height take-off	m 1080
Wind direction	south/south east
Top landing	yes
Recommended landing place	Via Caose (Garden Relais) m. 130
Co-ordinates Gps	45.83708, 11.74869
Car parking	yes
Refreshment	no

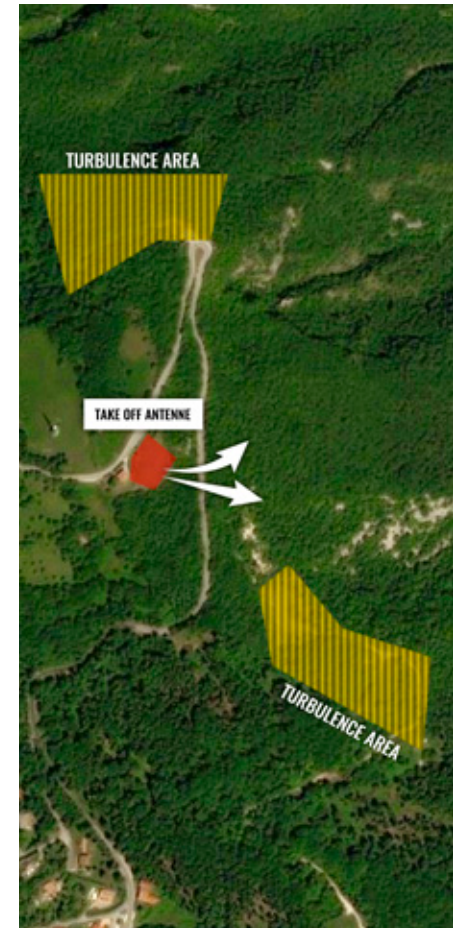
**TAKE-OFF AREA NOT FOR DAILY USE. AREA ESPECIALLY DEDICATED TO COMPETITION. IT IS NECESSARY TO MAKE A REQUEST IN ADVANCE TO USE IT.**

Wide grassy take-off that can be used by experienced paraglider and hang-glider pilots. On the road Cadorna SP 148 follow directions for Cima Grappa until you reach Campo Solagna. 300 mt after the restaurant turn right following directions for Col Campeggia. After the second switchback, reaching a small crossroads, you will be at Col Campeggia.

This take-off area is suitable for **south-southeast** and **light southwest winds**.

We advise pilots to be careful of the wind intensity: the take-off is located inside a narrow valley. possibility of south-west leeward in the afternoon.

# TAKE-OFF ANTENNE



## DATA SHEET

Take-off area	Costalunga
Height take-off	m. 750
Wind direction	east
Top landing	yes
Recommended landing place	Via Casale Nuovo (Paradiso) m.190
Co-ordinates Gps	45.81195, 11.74501
Car parking	yes
Refreshment	no

## FREE AREA

Grassy take-off area for paragliders.

After the 7° hairpin turn on the road Cadorna SP 148 the take-off, known also as Costa Lunga, will be on your left.

This take off should be used with **east wind**.

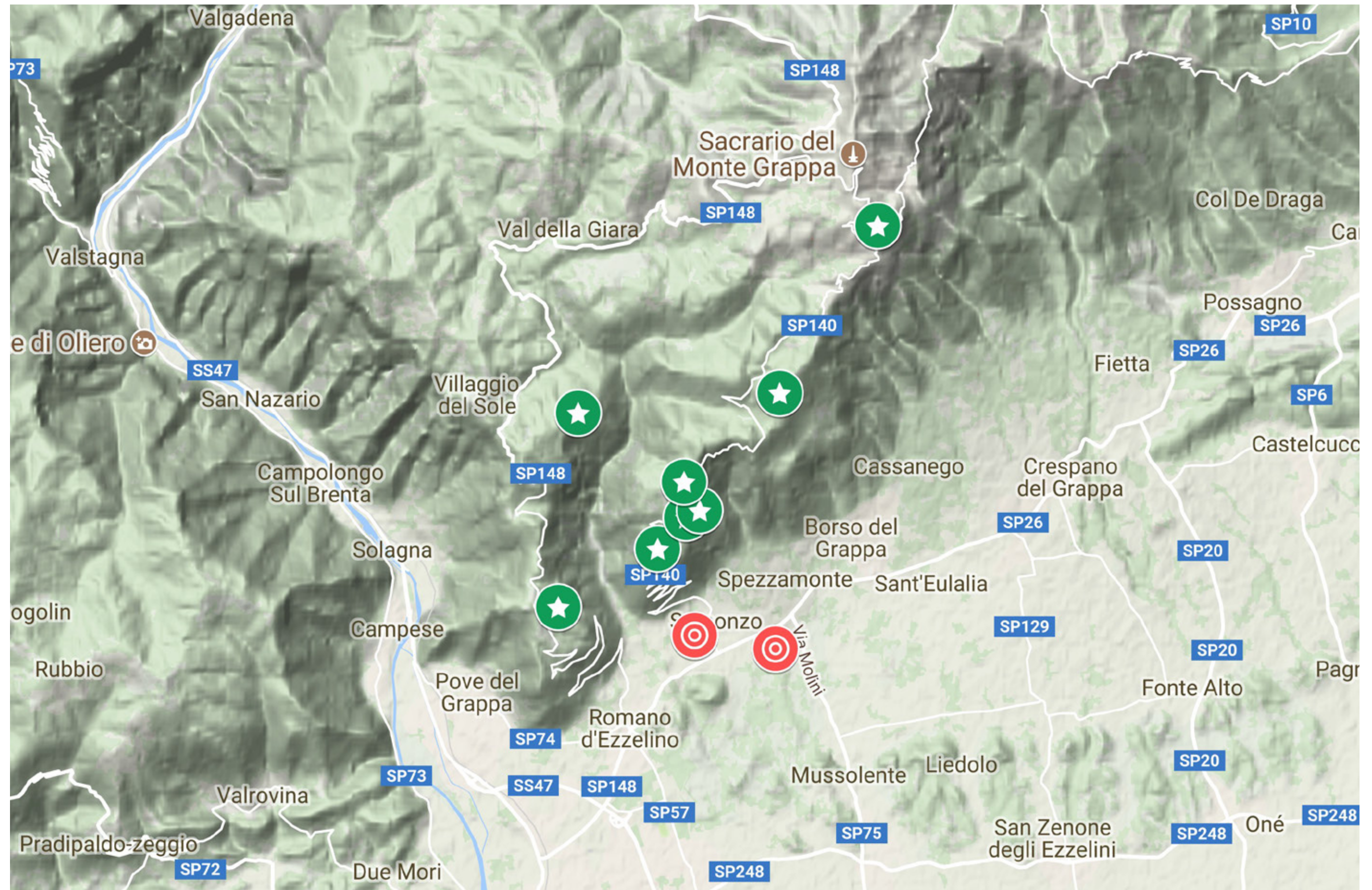
We recommend pilots to use the shuttle service to reach this take-off due to the lack of parking spots.

Pay attention to the indicated turbulence areas.

Possibility of south and/or west leewards in the afternoon.



# TAKE-OFF/LANDINGS MAP







**Consorzio Turistico Vivere il Grappa**  
Piazza al Paradiso 11, 31030 Semonzo di Borso del Grappa (TV) Italy  
E.mail: [info@vivereilgrappa.it](mailto:info@vivereilgrappa.it) - Tel.: +39 0423 910 526

